



Think digital, add value.

# The Asset Administration Shell

Implementation made easy! ...?



A teal-tinted background image showing a close-up profile of a person wearing a white hard hat and safety glasses, looking towards the right.

# Agenda

A teal-tinted background image showing a person's hands holding a tablet computer. The screen displays a data visualization with a bar chart and a line graph.

~~(1 min)~~

~~Explaining the whole concept of digital twins, the AAS and the standardization~~

~~(19 min)~~

~~Talking about all the reasons why the Asset Administration Shell brings benefits to your company~~

~~(0 min)~~

~~Telling the audience that there is no magic and some work needs to be done if you want to productively benefit from all the use cases~~

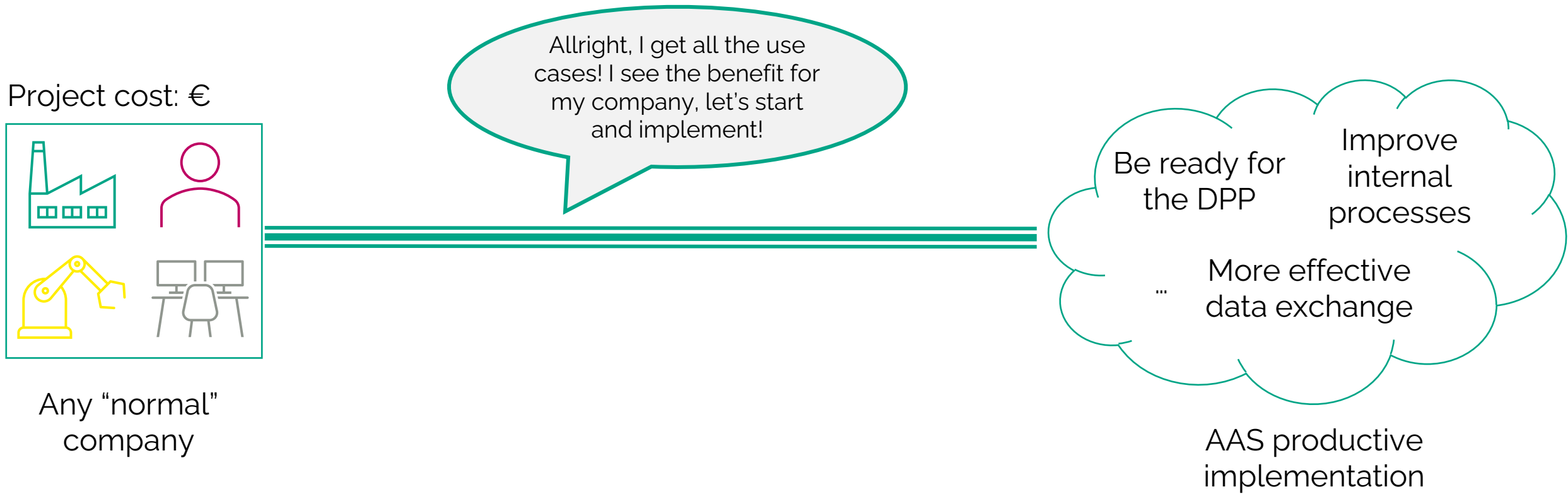


**Let's face it**

Back from the trade fair and  
into reality

# THERE AND BACK AGAIN...

A effortless journey to a productive implementation!



# THERE AND BACK AGAIN...

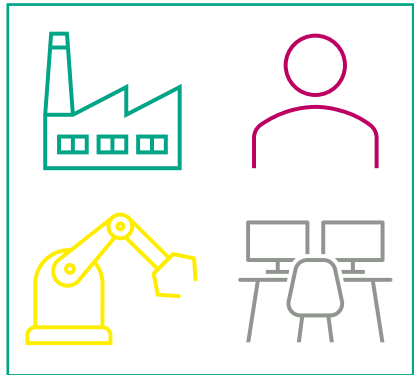
A journey to a productive implementation!



# THERE AND BACK AGAIN...

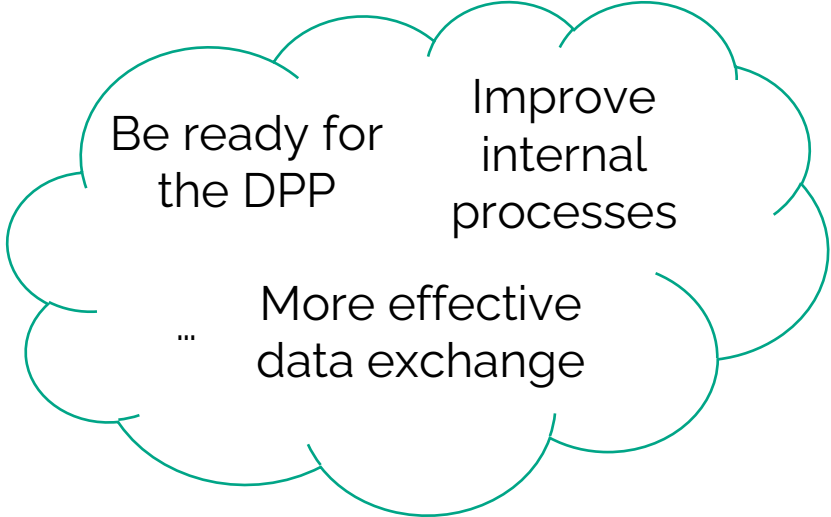
A long journey to a productive implementation!

Project cost: €€



Any "normal" company

We have no innovation department and no access to resources with software expertise...

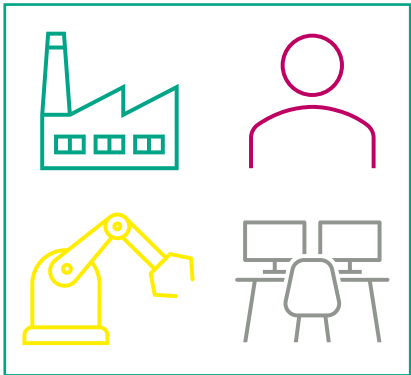


AAS productive implementation

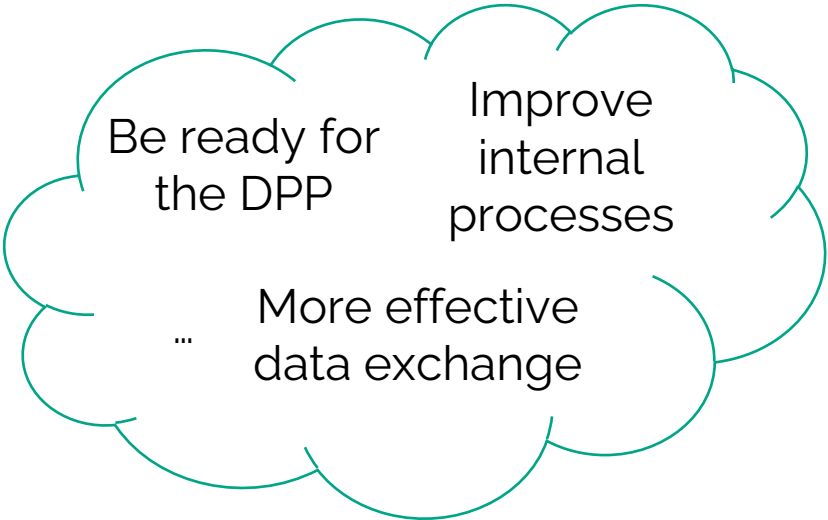
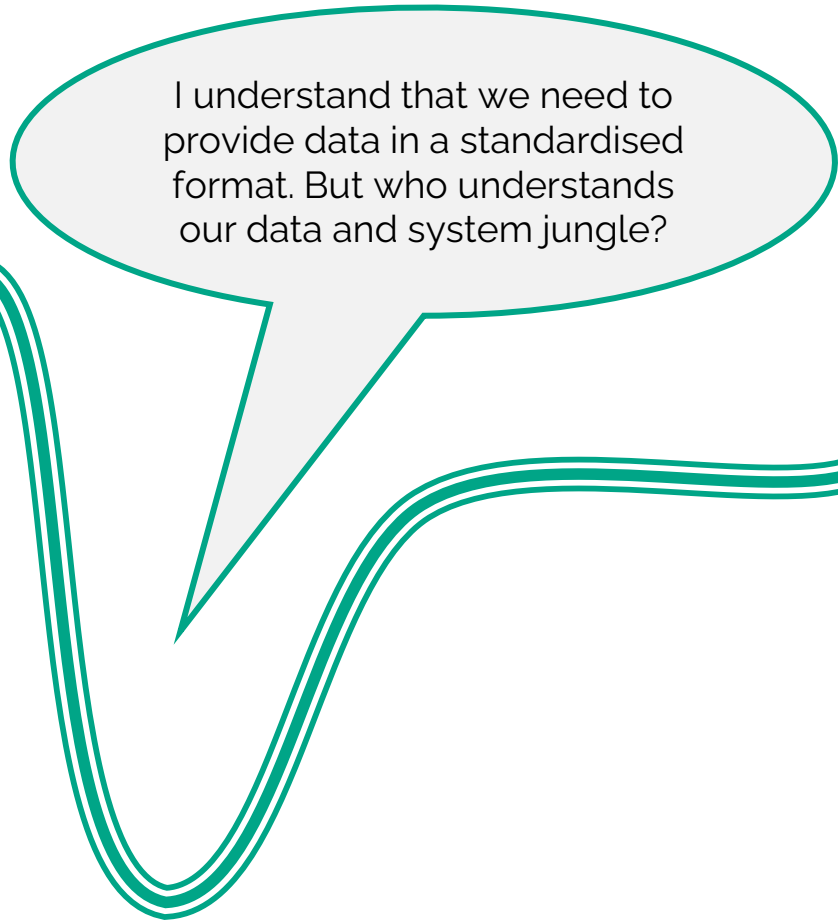
# THERE AND BACK AGAIN...

A costly journey to a productive implementation!

Project cost: €€



Any "normal" company



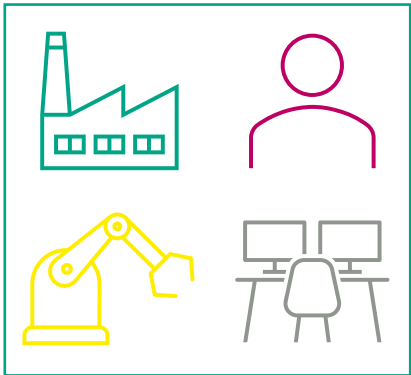
AAS productive implementation



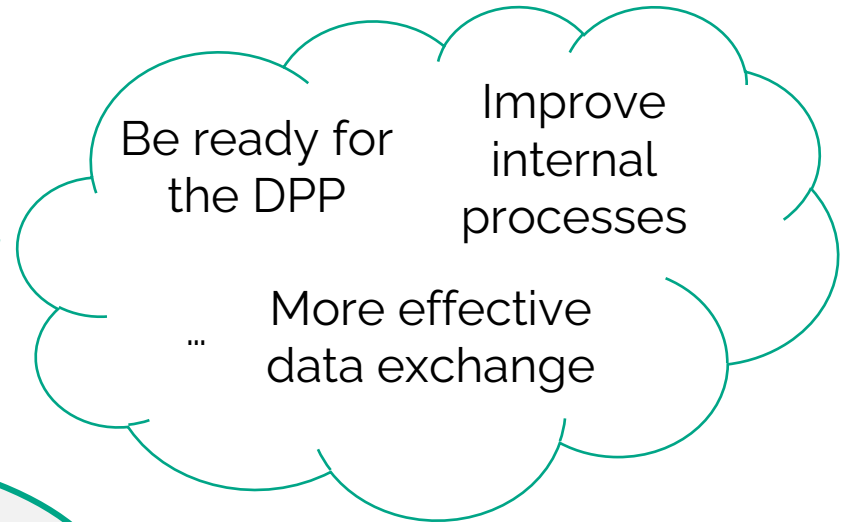
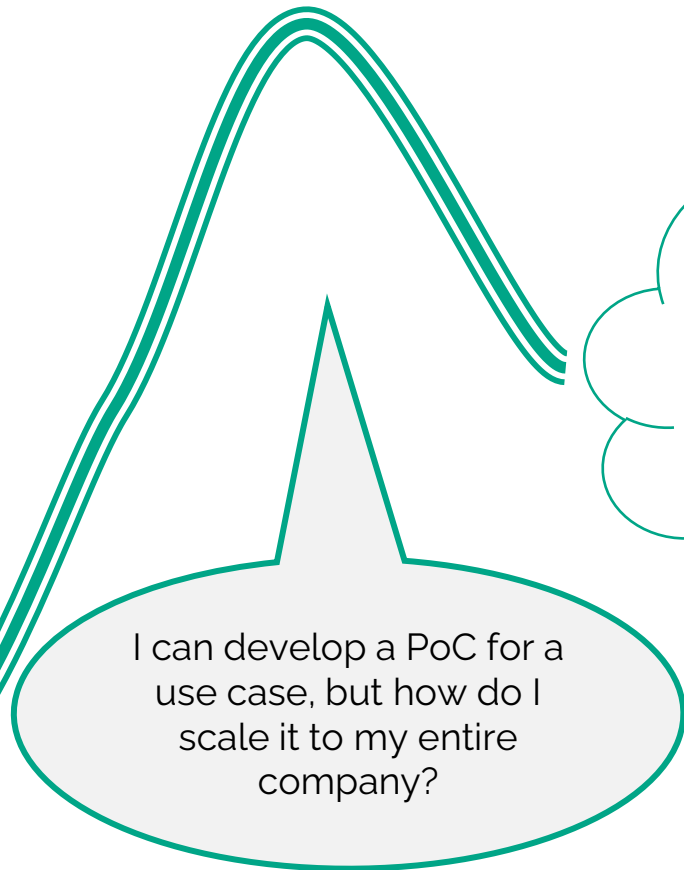
# THERE AND BACK AGAIN...

A costly journey to a productive implementation in the hope that it will work!

Project cost: €€€



Any "normal" company



AAS productive implementation



**And now?**

Let's get things straight

# WHY SHOULD I START IMPLEMENTING?

✓ Beneficial use cases are identified, and future potential is clear

✓ “Nothing new” – Companies with know-how and solutions already on the market

**Things don't need to be easy all the time,  
they just need to be worth doing!**

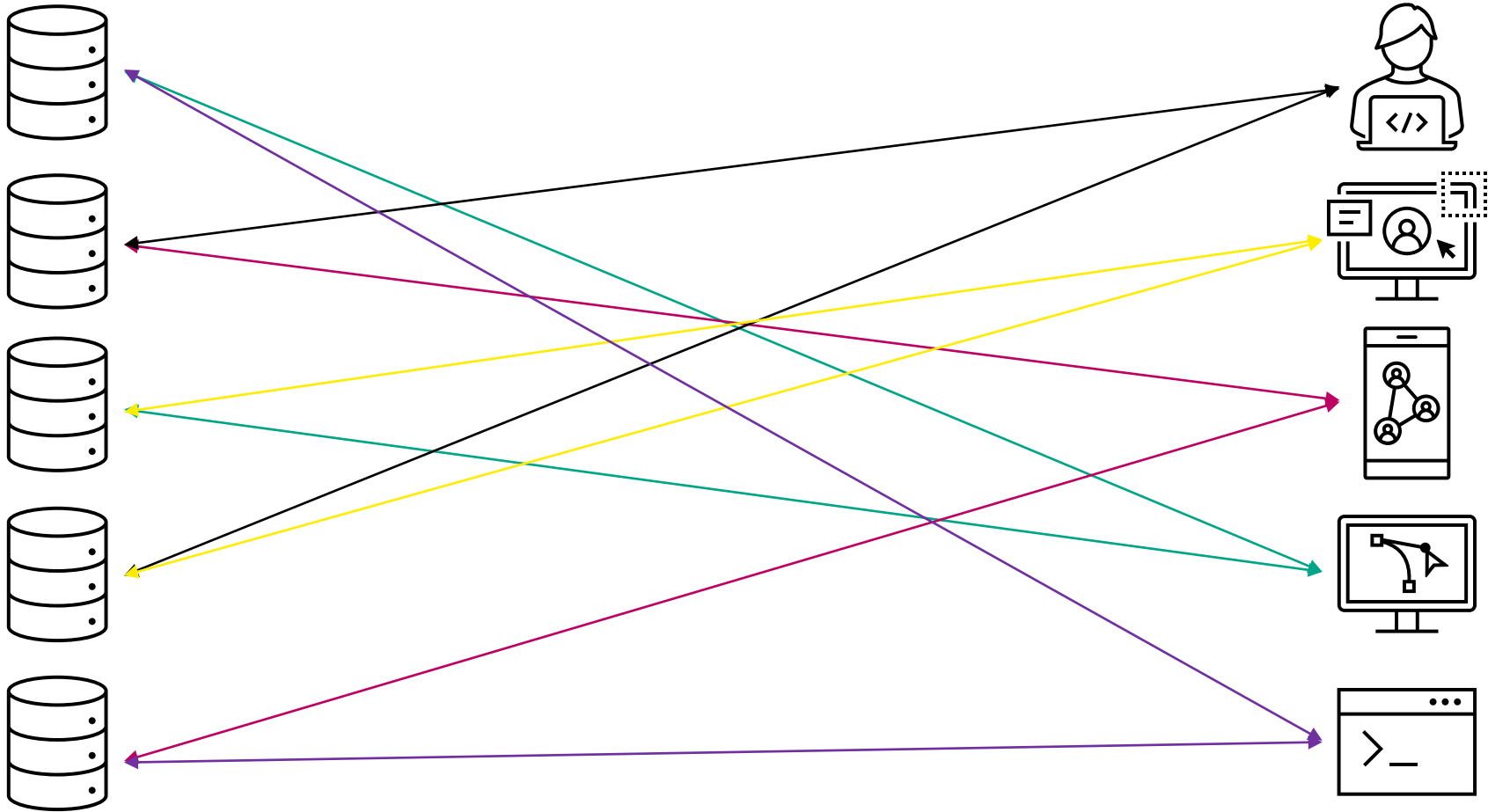
✓ Industry-wide effort for standardization and interoperability

✓ Leverage on business value today and be prepared for the DPP tomorrow.



**How shall I start?**  
Let's get things sorted

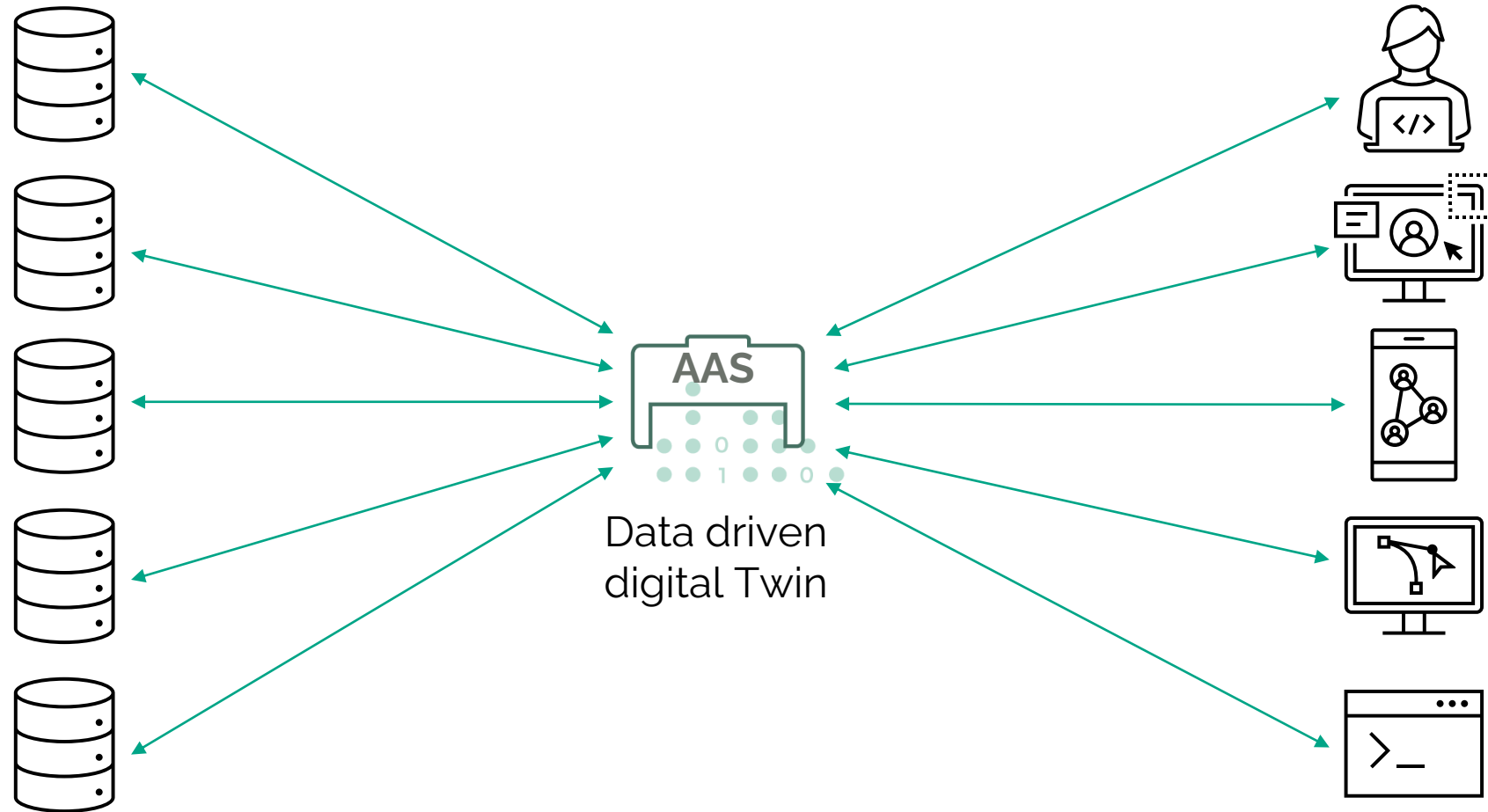
# ONE INTEGRATION HELL



Proprietary data sources

Applications

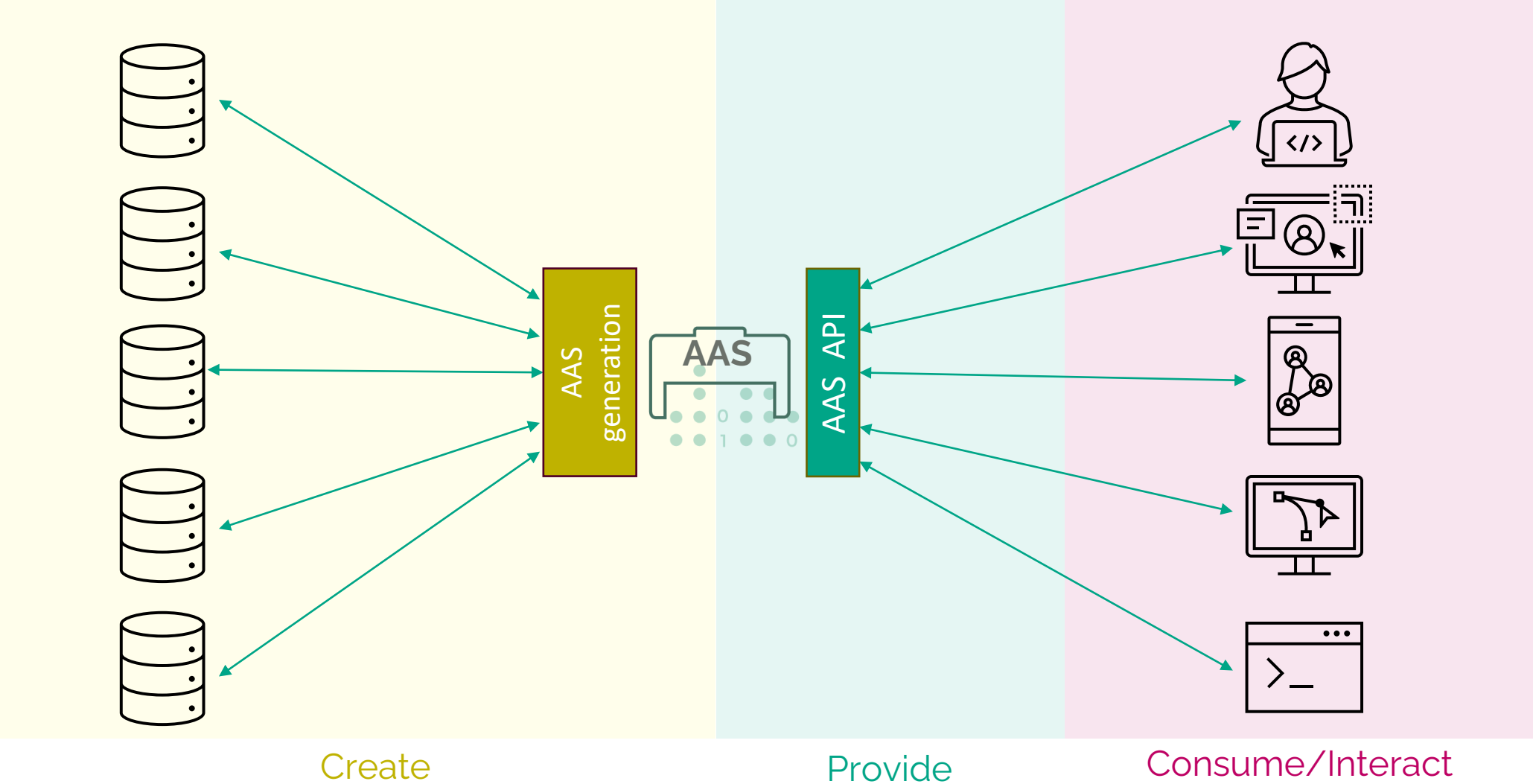
# TWO PERSPECTIVES



Proprietary data sources

Applications

# THREE KEY ELEMENTS

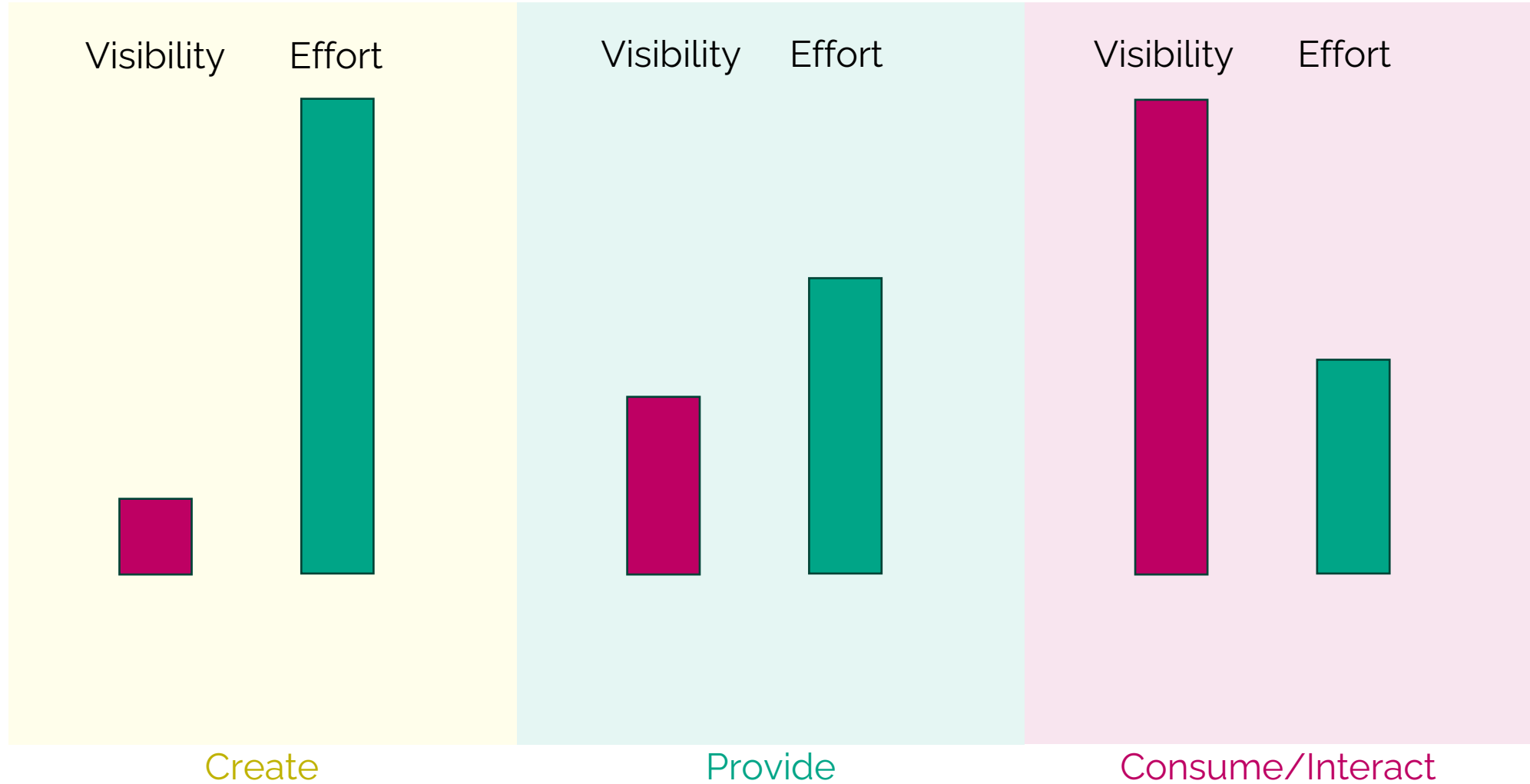




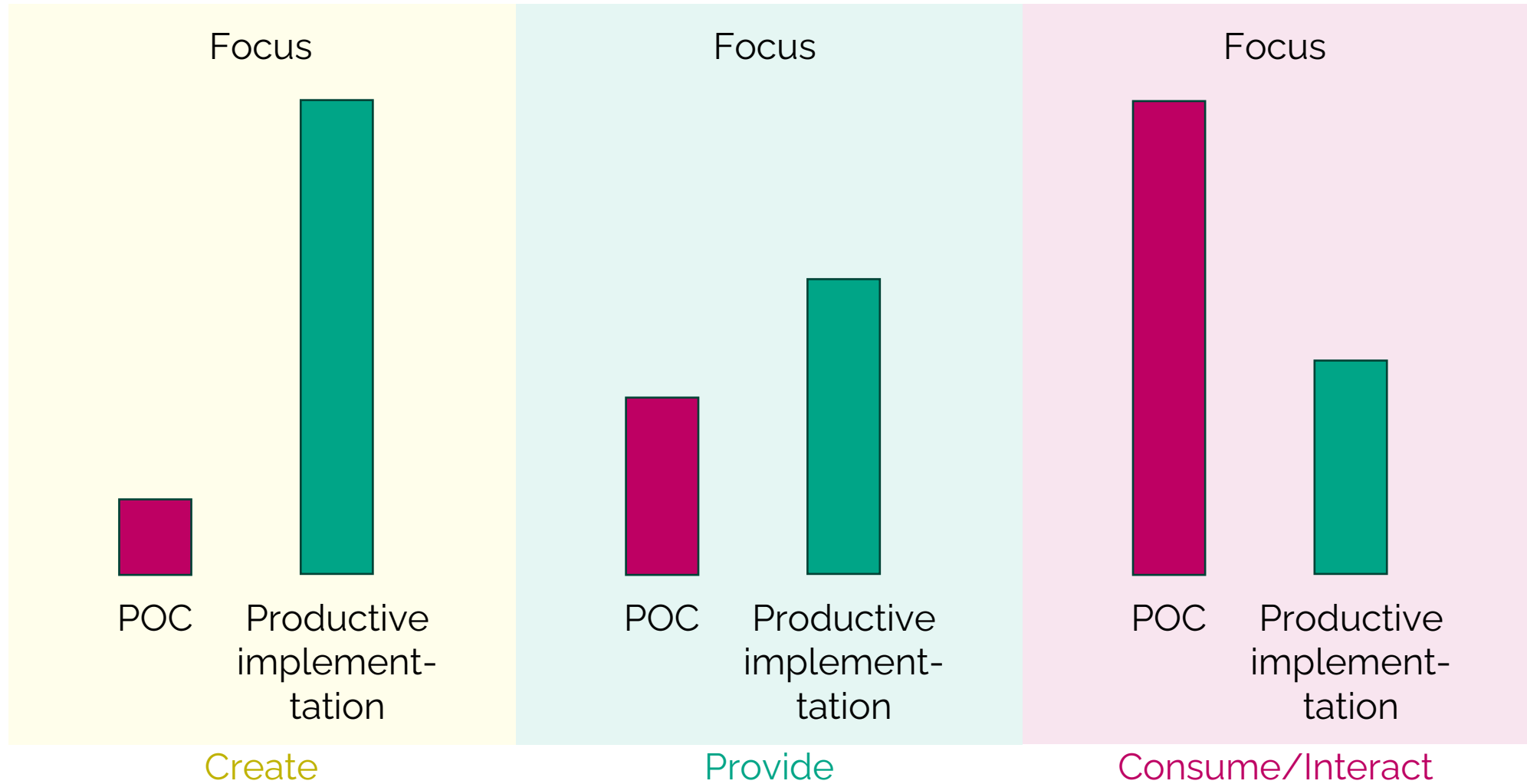
**Show off, or benefit?**  
Get awareness but don't  
lose focus



# THE POC TRAP alias THE SCALING PROBLEM



# THE POC TRAP alias THE SCALING PROBLEM





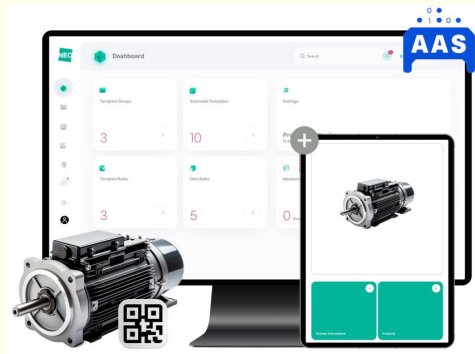
**Let's get started!**

Cover all aspects as they  
require it

# NEOCEPTION® DIGITAL TWIN INFRASTRUCTURE



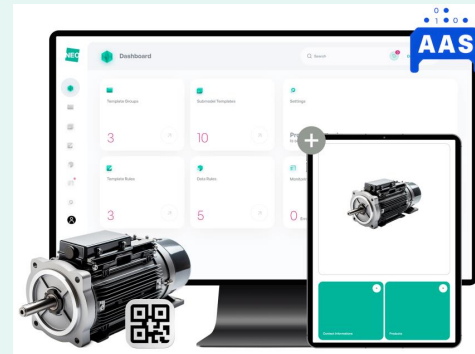
Dynamic, context based and automated creation of AAS



DIGITAL TWIN INFRASTRUCTURE

Create

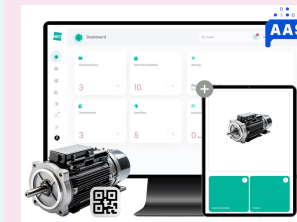
Provisioning on-demand or from a repository?  
Our hybrid architecture enables both!



DIGITAL TWIN INFRASTRUCTURE

Provide

Our out of the box applications enable a fast start and our interfaces let you imagine your own applications.



+



DIGITAL TWIN INFRASTRUCTURE

SPECIFIC REQUIREMENTS

Consume/Interact

# CREATE, PROVIDE AND USE AAS



Create

Provide

Consume/Interact

# CREATE, PROVIDE AND USE AAS – AUTOMATION ON DEMAND

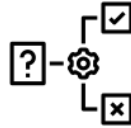
Application



1. Request an AAS to work with and provide input data (assetID, role, ...)

Neoeption Digital Twin Infrastructure - Core

Modeling



2. Select the AAS template to build based on context data

Standardization



3. Map standardized property to proprietary location

Mapping



4. Request the data from the live systems

Connectors

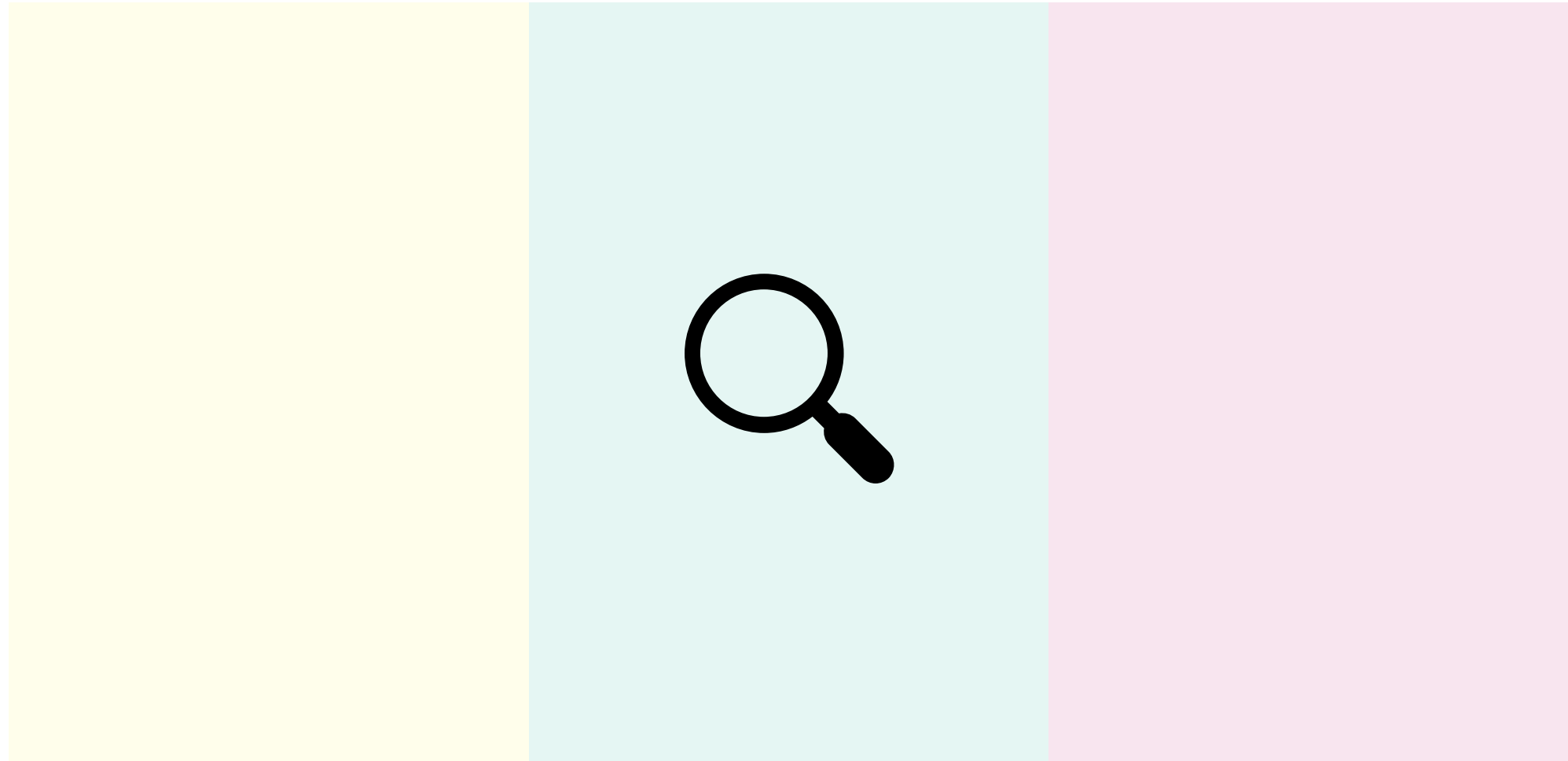


5. Build AAS based on template and fill with extracted and transformed data



**Configuration instead of programming!**

# CREATE, PROVIDE AND USE AAS

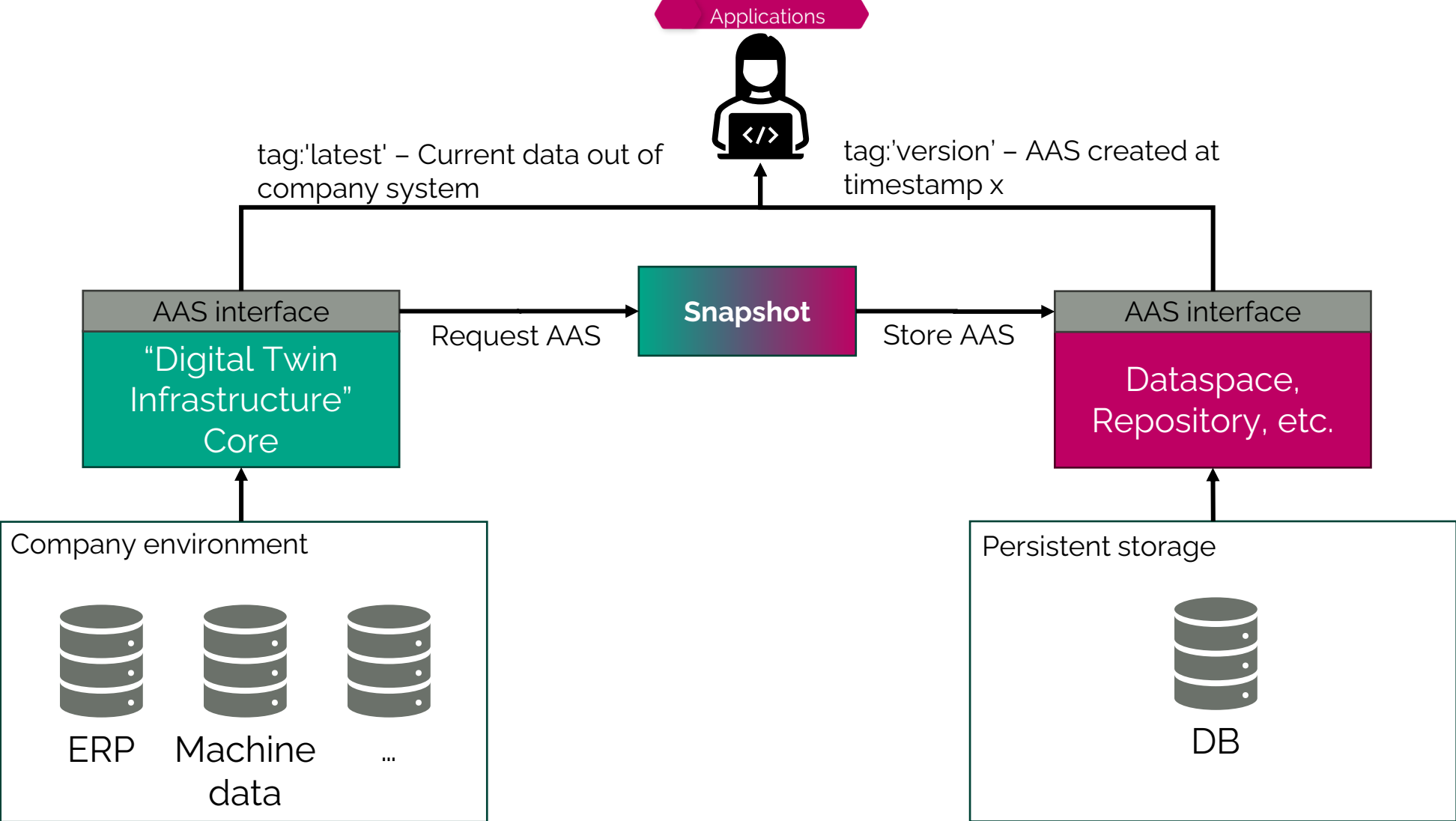


Create

Provide

Consume/Interact

# CREATE, PROVIDE AND USE AAS – HYBRID APPROACH





# CREATE, PROVIDE AND USE AAS

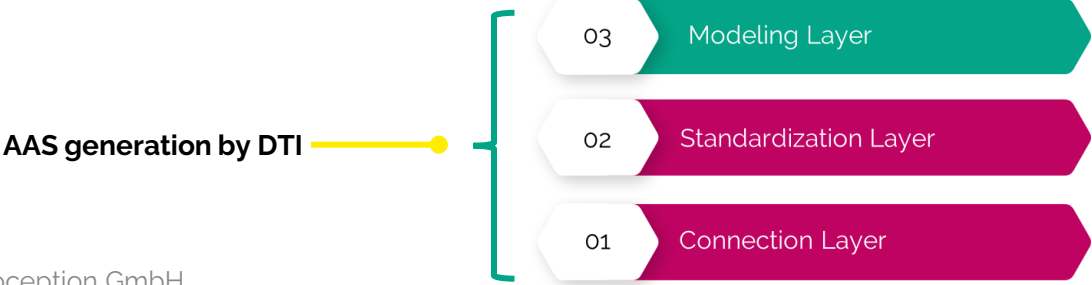
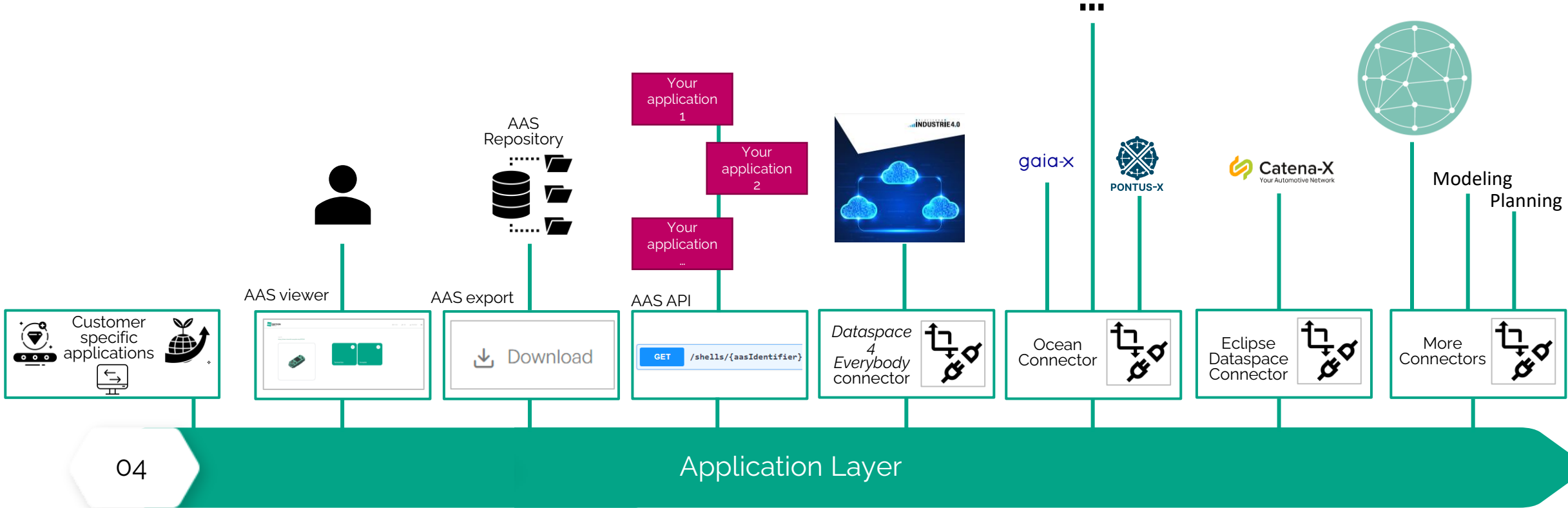


Create

Provide

Consume/Interact

# CREATE, PROVIDE AND USE AAS - ENABLER FOR BUSINESS APPLICATIONS AND DATA SPACES





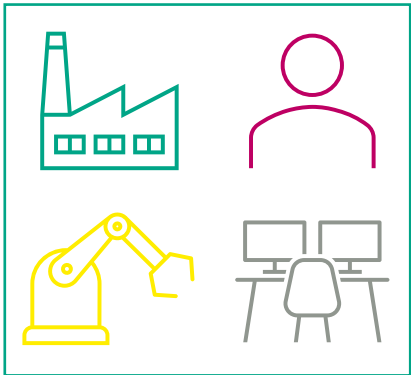
**Wrap it up!**

Or as your german teacher said  
„Don't forget the conclusion!“

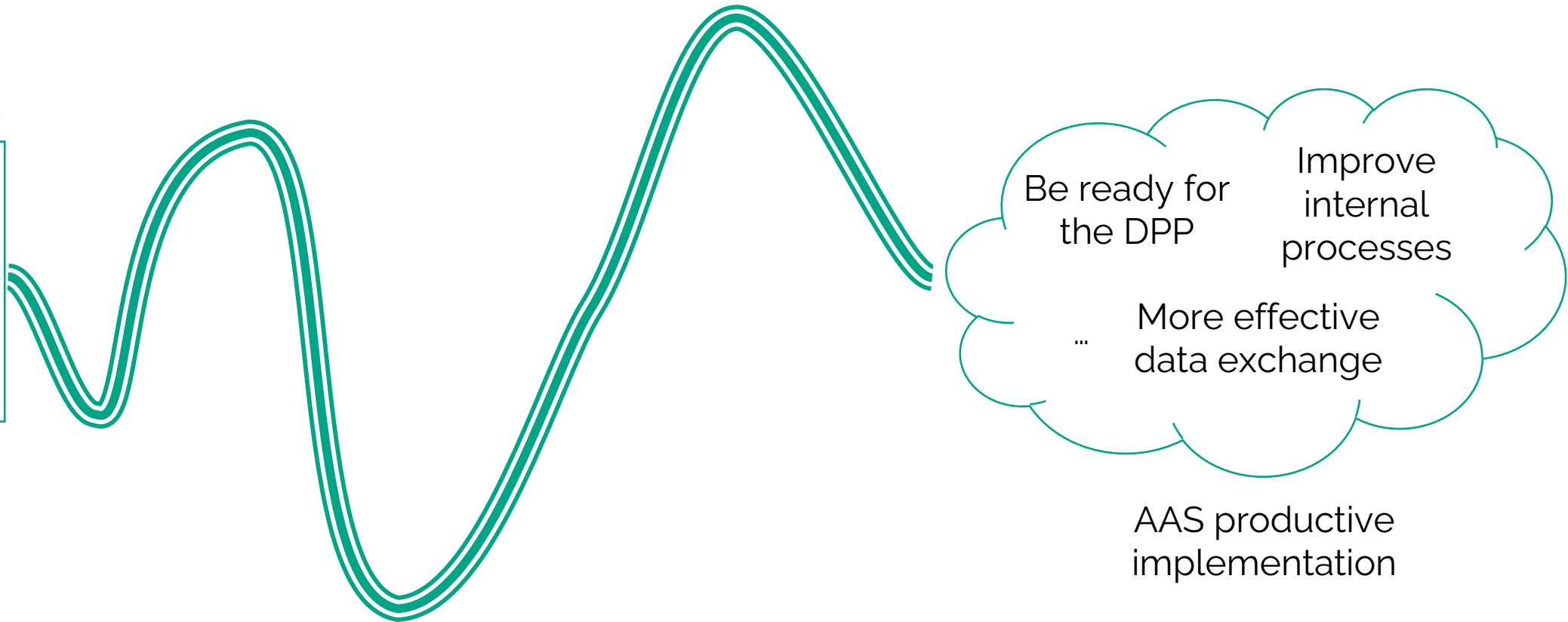
# WHY SHOULD I START IMPLEMENTING?

A digital transformation is challenging and may be overwhelming when starting...

Project cost: €€€



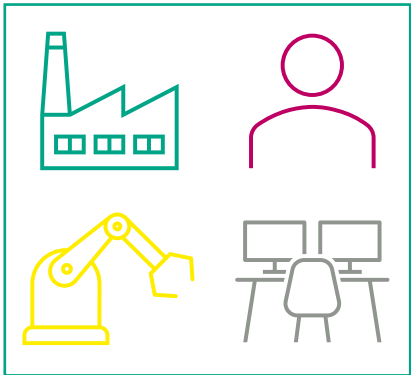
Any "normal" company



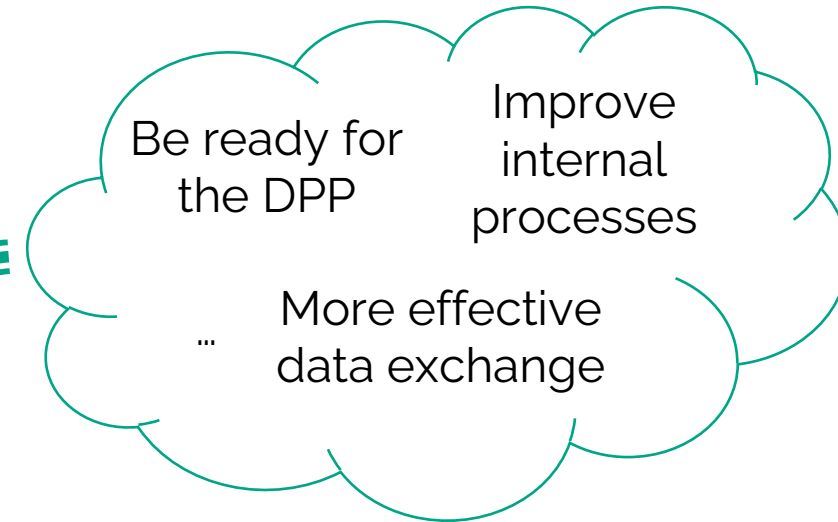
# WHY SHOULD I START IMPLEMENTING?

..., but with the right approaches, tools and partners, the challenge becomes an opportunity.

Project cost: €€



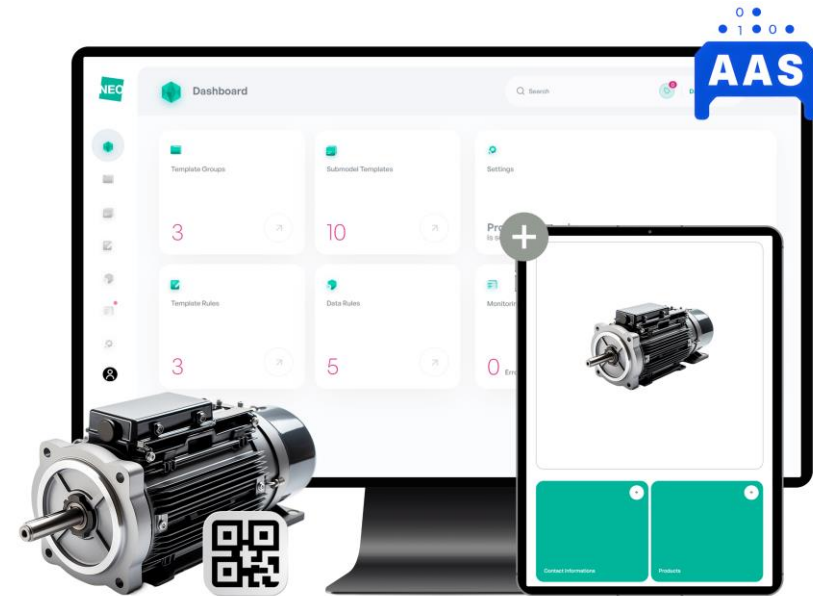
Any "normal" company



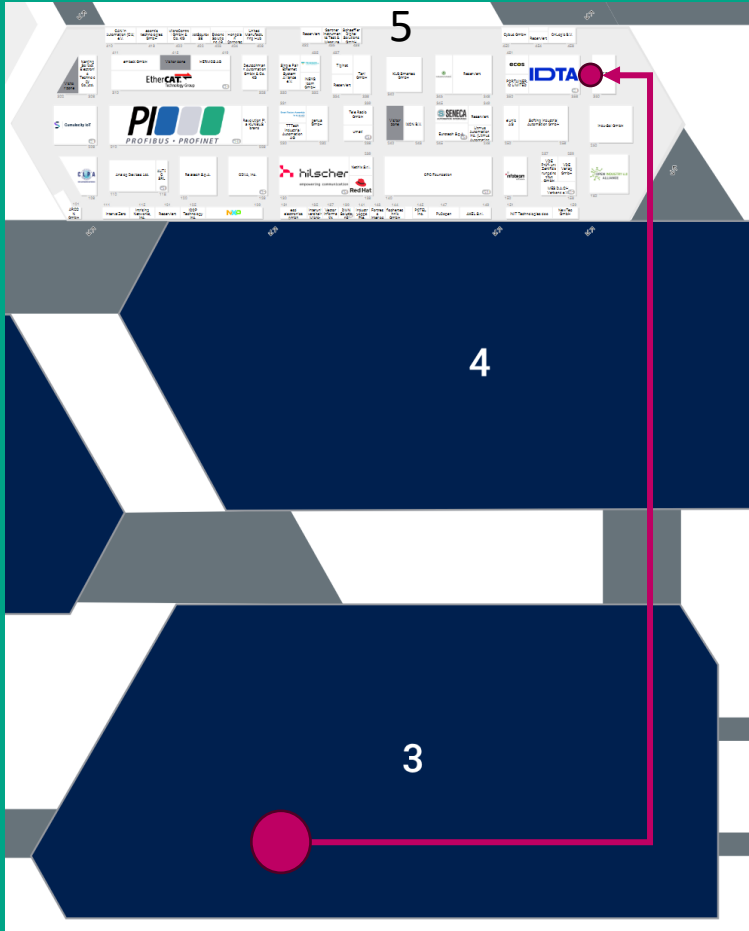
AAS productive implementation

# WE PUT OUR BEST IN DEVELOPING YOU A SOFTWARE PRODUCT

- Many years of development resources – many to come for future releases
- Active participation in IDTA, Plattform I4.0, NLM, ... for best requirement engineering
- Deployed in your infrastructure
- Enabling you to scale without project
- Product benefits
  - Ongoing development
  - Always the current standards
  - Security monitoring
  - Update and Backup-functionality
- ...



Find us in Hall 5  
@ IDTA booth 358



**Andreas Wick**  
Head of Product Management

[awick@neoception.com](mailto:awick@neoception.com)



**CONTACT  
US**